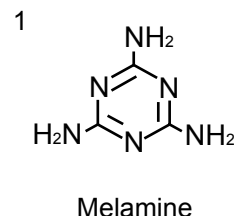
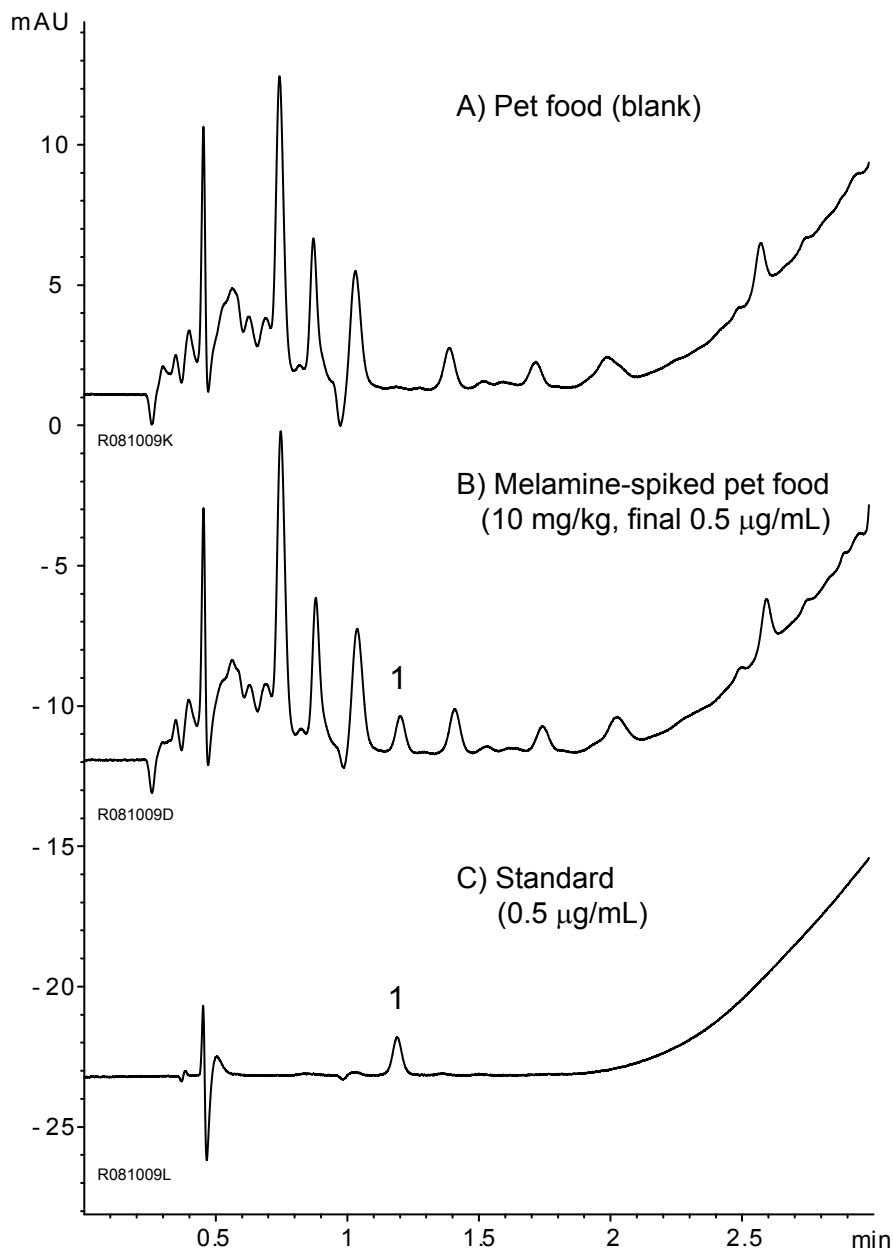


ペットフード中のメラミン - LC/MS対応条件

Melamine in pet food - applicable to LC/MS analysis

R081015A



Sample preparation method

- Pet food (1 g)
- ← 50% aqueous acetonitrile (5 mL)
- Sonication for 30min
- Centrifugation at 10000 rpm for 10 min
- Filtration
- Dilution 4 times with eluent A
- Filtration
- Injection

Column : YMC-UltraHT Hydrosphere C18 (2 µm, 12 nm)
50 X 2.0 mm I.D.

Eluent : A) water/heptafluorobutyric acid (100/0.1)
B) methanol/heptafluorobutyric acid (100/0.1)
5%B (0-0.17 min), 5-90%B (0.17-3 min)

Flow rate : 0.4 mL/min

Temperature : 40°C

Detection : UV at 240 nm

Injection : 1 µL