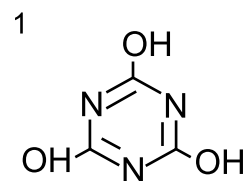
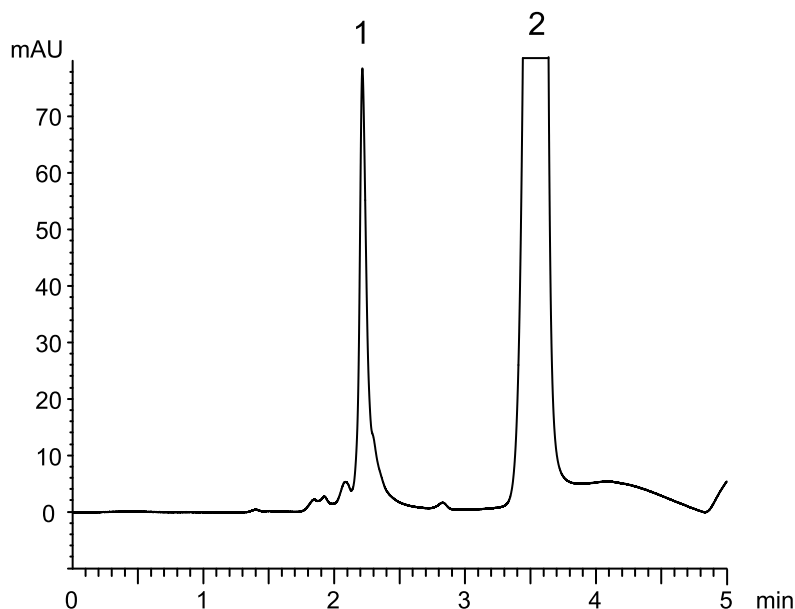


メラミンとシアヌル酸 - LC/MS対応条件

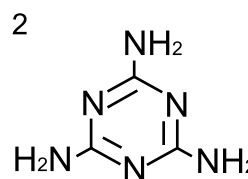
Melamine and Cyanuric acid - applicable to LC/MS analysis

R081023E

A) UV at 210 nm

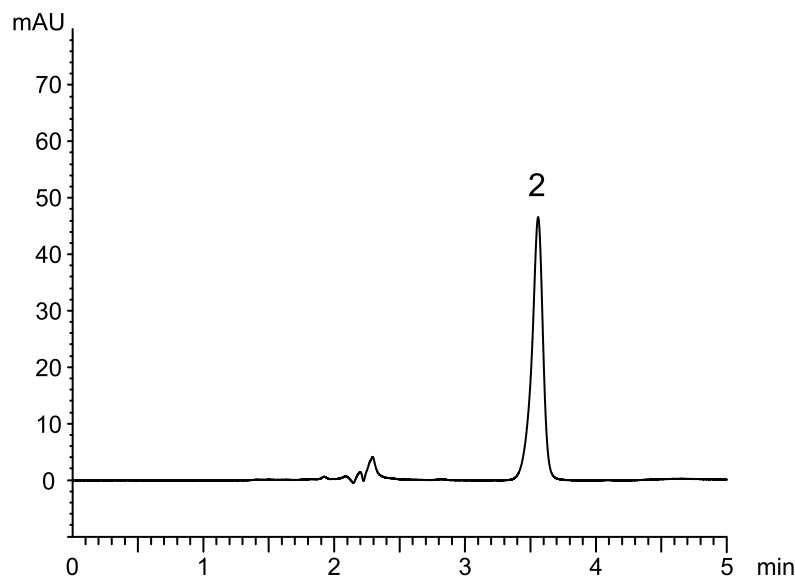


Cyanuric acid



Melamine

B) UV at 240 nm



| | |
|-------------|---|
| Column | : YMC-Pack Diol-NP (5 μm, 12 nm) 150 X 3.0 mmI.D. |
| Eluent | : A) 10 mM CH ₃ COONH ₄ B) methanol 95-50%B (0-5 min) |
| Flow rate | : 0.4 mL/min |
| Temperature | : 40°C |
| Detection | : A) UV at 210 nm, B) UV at 240 nm |
| Injection | : 1 μL |
| Sample | : Cyanuric acid (0.5 mg/mL), Melamine (0.2 mg/mL) |