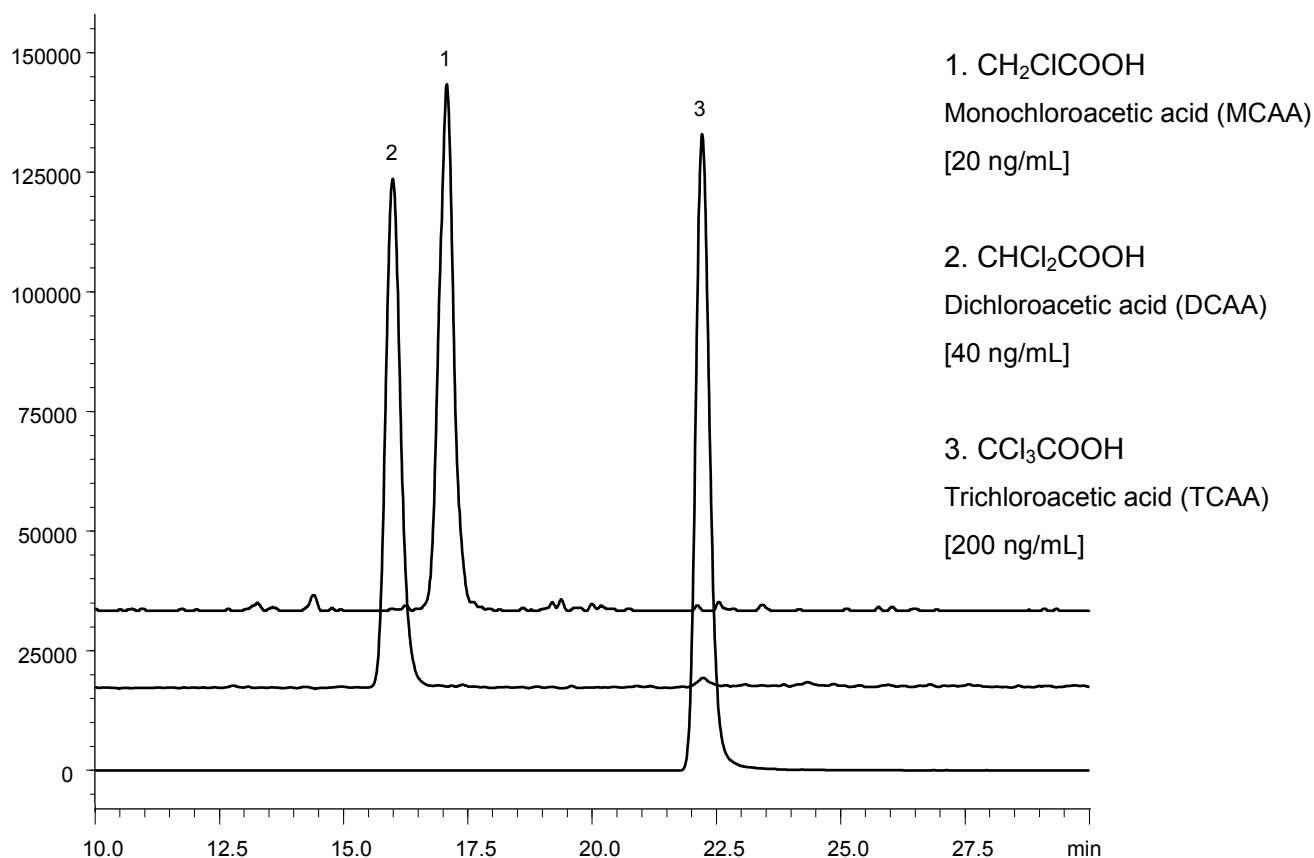


## LC/MS によるハロ酢酸一斉分析

Simultaneous separation of haloacetic acids by LC/MS

P120126A



Courtesy of J. Watanabe, SHIMADZU CORPORATION

Column	: YMC-Triart C18 (3 μm, 12 nm) 150 X 4.6 mm I.D.
Eluent	: A) water/formic acid (100/0.2) B) methanol 5-100%B (0-38 min)
Flow rate	: 0.2 mL/min
Temperature	: 30°C
Detection	: Shimadzu LCMS-8030, ESI, Negative, MRM Monochloroacetic acid (m/z 139.1/35.1) Dichloroacetic acid (m/z 127.1/83.1) Trichloroacetic acid (m/z 207.0/117.0)
Injection	: 50 μL