

Preparative HPLC systems

K-Prep EX

K-Prep EX is an explosion proof HPLC preparative system designed for GMP manufacturing plants.



Features

- Explosion proof system
- The explosion proof HPLC unit may be installed in a hazardous area and controlled from a safe area
- Operable at hazardous area by operation station (optional)
- Custom-made system available upon request
- Compliance with IQ/OQ validation and CSV
- Documentation maintenance feature allows for adjusting recordkeeping to meet your needs

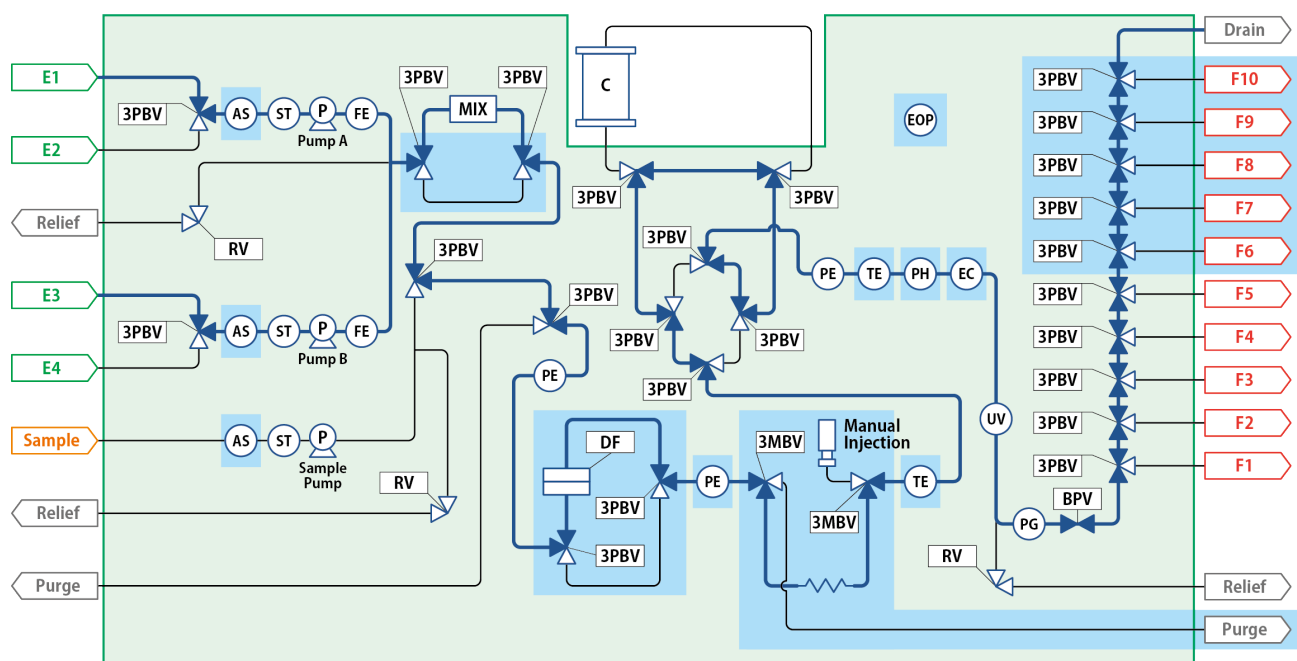
Channel diagram

MARK	NAME
E	Inlet Port
F	Fraction Port
P	Pump
C	Column
3PBV	3way Pneumatic Ball Valve
3MBV	3way Manual Ball Valve
FE	Flow Sensor

MARK	NAME
PE	Pressure Sensor
UV	UV Detector
AS	Air Sensor
TE	Temperature Sensor
PH	pH Sensor
EC	Conductivity Sensor
ST	Strainer

MARK	NAME
MIX	Mixer
RV	Relief Valve
BPV	Back Pressure Valve
PG	Pressure Gauge
DF	Disk Filter
EOP	Operator Station

* Gradient mode
 optional



Specification

	EX03KG	EX06KG	EX12KG	EX25KG
Gradient capability*	yes	yes	yes	yes
Flow rate range	30 - 3000 mL/min	60 - 6000 mL/min	125 - 12500 mL/min	250 - 25000 mL/min
Flow rate accuracy	±2% (300 mL/min and above)	±2% (600 mL/min and above)	±2% (1250 mL/min and above)	±2% (2500 mL/min and above)
Maximum pressure	10 MPa			
Fraction port	3/8", SUS316, Swagelok fitting	1/2", SUS316, Swagelok fitting	1/2", SUS316, Swagelok fitting	3/4", SUS316, Swagelok fitting
Inlet port	1/2", SUS316, Swagelok fitting	3/4", SUS316, Swagelok fitting	3/4", SUS316, Swagelok fitting	1", SUS316, Swagelok fitting
Solvent channel	4ch (2 × 2ch)			
Fraction collector	5-channel switching valve method + drain			
Sample pump	1 - 300 mL/min	1 - 1000 mL/min	1 - 1000 mL/min	30 - 3000 mL/min
Detector	UV (200 - 400 nm), 3 variable-wavelengths measurable			
Control and display	FA PC (control at safe area) and programmable logic controller			
Utility	three-phase AC 200V 50/60 Hz			
	4.0 kW	15 kW	15 kW	23 kW
	0.5 MPa dry air			

* Isocratic type are available. Please inquire.

Before use (installation, operation, maintenance or check-up) of our products, instruction manuals should be carefully read and understood, and safety rules and precautions followed as outlined in the manuals.

Worldwide Availability

YMC America, Inc.
www.ymcamerica.com

YMC Europe GmbH
ymc.eu

YMC Switzerland LLC
www.ymc-schweiz.ch

YMC Shanghai Rep. Office
www.ymcchina.com

YMC India Pvt. Ltd.
www.ymcindia.com

YMC Korea Co., Ltd.
www.ymckorea.com

YMC Taiwan Co., Ltd.
www.ymctaiwan.com

YMC Singapore Tradelinks Pte. Ltd.
ymc.sg

YMC CO., LTD.

YMC Karasuma-Gojo Bldg., 284 Daigo-cho, Karasuma Nishiiru Gojo-dori, Shimogyo-ku, Kyoto, 600-8106, Japan
TEL: +81-75-342-4515 FAX: +81-75-342-4550
www.ymc.co.jp sales@ymc.co.jp