

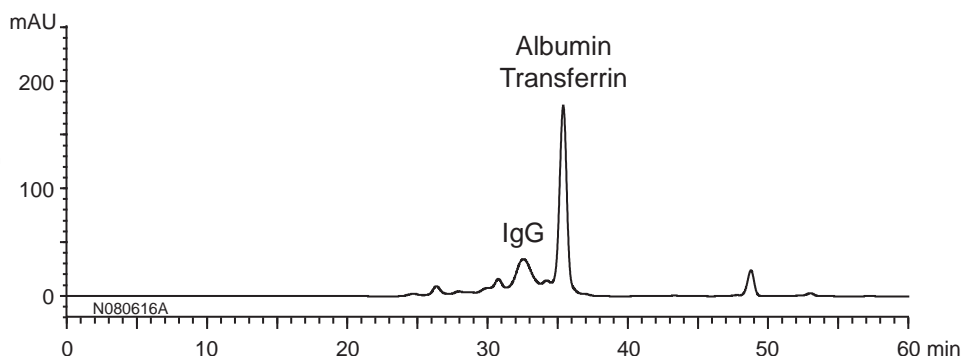
YMC-Pack Diolを用いたペプチド・タンパク質の分離例一覧 (Data No.をクリックするとPDFが開きます)

Data No.	Data名	化合物名	製品番号
G911227B	グリシンオリゴマー	Pentaglycine Triglycine Glycine	DL06S05-5008WT
G911217A G911217B G911217C	ペプチド	Insulin (Bovine) Neurotensin Angiotensin II Glycine	DL06S05-5008WT DL12S05-5008WT
N080623L	ペプチドマッピング	Peptide mapping	DL06S05-5008WT DL12S05-5008WT
G911218A	ミオグロビン分解物	myoglobin fragments 1-153 (MW 17000) 1-131 (MW 14500) 56-153 (MW 10700) 56-131 (MW 8200) 1-55 (MW 6300) 132-153 (MW 2500)	DL12S05-5008WT
G911217D	チトクローム c	Cytochrome c (hexamer) Cytochrome c (tetramer) Cytochrome c (trimer) Cytochrome c (dimer) Cytochrome c (monomer)	DL12S05-5008WT DL20S05-5008WT
N080702B	ヒト血清中のタンパク質	IgG Transferrin Albumin	DL20S05-3008WT DL30S05-3008WT
P080528A	マウス腹水中のタンパク質	IgG Transferrin Albumin	DL20S05-3046WT DL30S05-3046WT
N080702A	血漿成分	Human serumIgM IgA Fibrinogen γ-Globulin IgG Transferrin Albumin α1-Antitrypsin Carbonic anhydrase Lysozyme Uric acid Creatinine	DL20S05-3008WT DL30S05-3008WT
P080530A	モノクローナル抗体	Mouse monoclonal IgG1 (anti-human	DL20S05-3046WT
R080708A	免疫グロブリン(IgG) 及びIgGフラグメント	Rabbit IgG Mouse IgG Fc fragment Mouse IgG Fab fragment	DL20S05-3008WT
G920108E	ヒト免疫グロブリン	Human IgM (κ), myeloma protein Normal human IgA	DL30S05-5008WT
G920108F	ヒト免疫グロブリン	Human IgM (κ), myeloma protein Normal human IgG	DL30S05-5008WT
G920108G	ヒト免疫グロブリン	Human IgM (κ), myeloma protein Normal human IgA Normal human IgG	DL20S05-5008WT DL30S05-5008WT
G920108D	ヒト免疫グロブリン (IgM κ鎖、ミエローマタンパク質)	Normal human IgM (κ), myeloma protein	DL30S05-5008WT
G920108B	ヒト免疫グロブリン (IgM λ鎖、ミエローマタンパク質)	Human IgG (λ), myeloma protein	DL30S05-5008WT
G920108C	ヒト免疫グロブリン (IgA)	Normal human IgA	DL30S05-5008WT
G920108A	ヒト免疫グロブリン (IgG)	Normal human IgG	DL30S05-5008WT
G911213A G911214A G911214I G911214B G911214C	タンパク分子量マーカー	Glutamate dehydrogenase (MW 290000) Lactate dehydrogenase (MW 142000) Enolase (MW 67000) Adenylate kinase (MW 32000) Cytochrome c (MW 12400)	DL12S05-5008WT DL20S05-3008WT DL20S05-5008WT DL30S05-5008WT
G920123B	カゼイン	Casein	DL30S05-5008WT

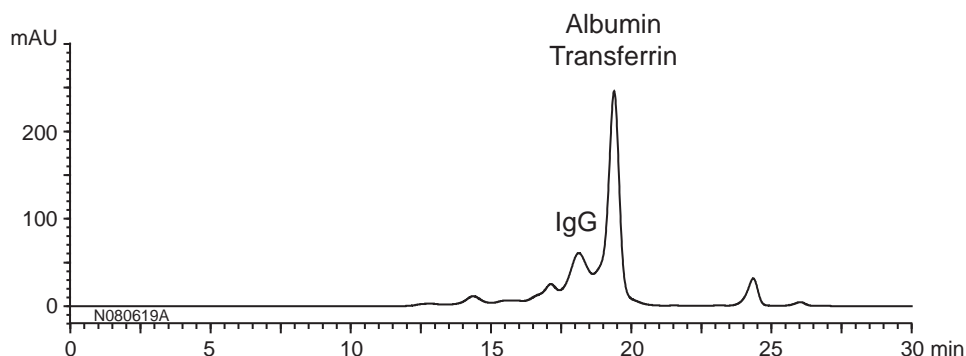
ヒト血清中のタンパク質
Proteins in human serum

N080702B

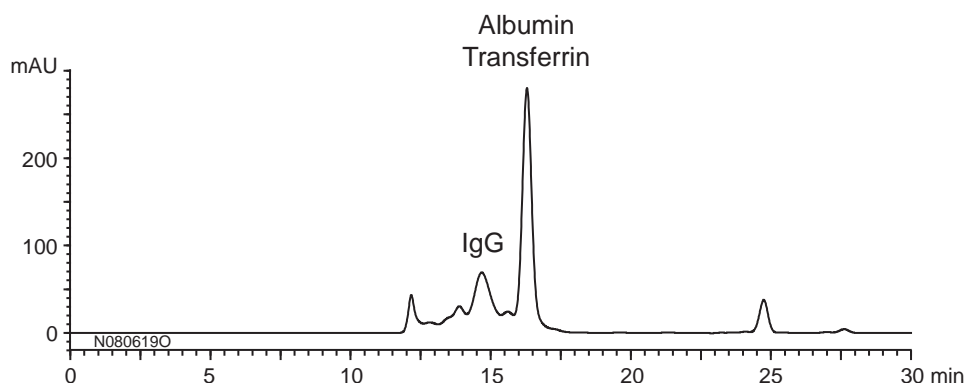
YMC-Pack Diol-300 + Diol-200
300 X 8.0 mmI.D. X 2



YMC-Pack Diol-300
300 X 8.0 mmI.D.



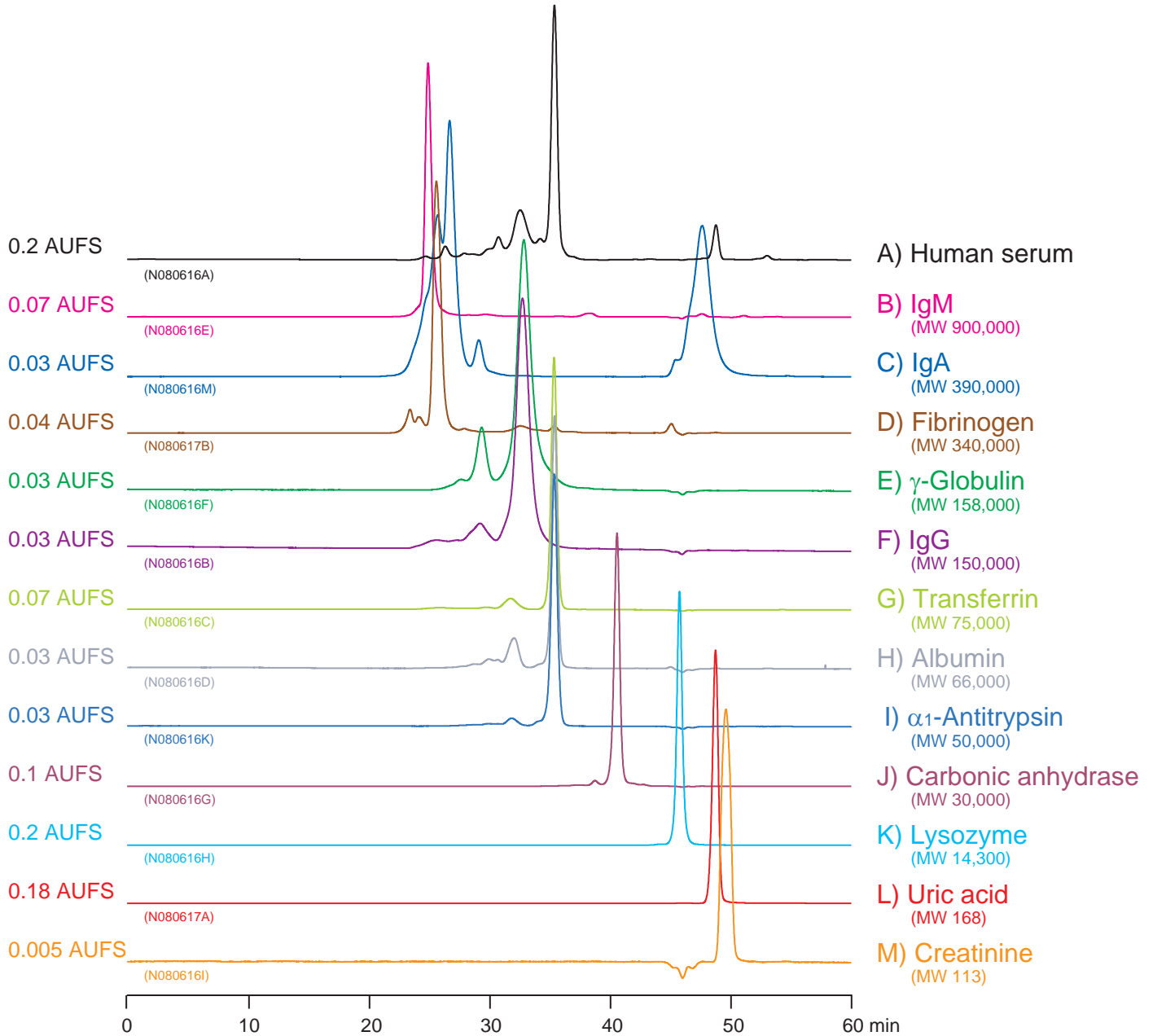
YMC-Pack Diol-200
300 X 8.0 mmI.D.



Eluent : 0.1 M KH_2PO_4 - K_2HPO_4 (pH 7.0) containing 0.2 M NaCl
 Flow rate : 0.5 mL/min
 Temperature : ambient (25°C)
 Detection : UV at 280 nm
 Injection : 20 μL
 Sample : Human serum (100 $\mu\text{L}/\text{mL}$)

血漿成分
Plasma constituents

N080702A



Column : YMC-Pack Diol-300 + Diol-200
300 X 8.0 mm I.D. X 2

Eluent : 0.1 M KH_2PO_4 - K_2HPO_4 (pH 7.0) containing 0.2 M NaCl

Flow rate : 0.5 mL/min

Temperature : ambient (25°C)

Detection : UV at 280 nm

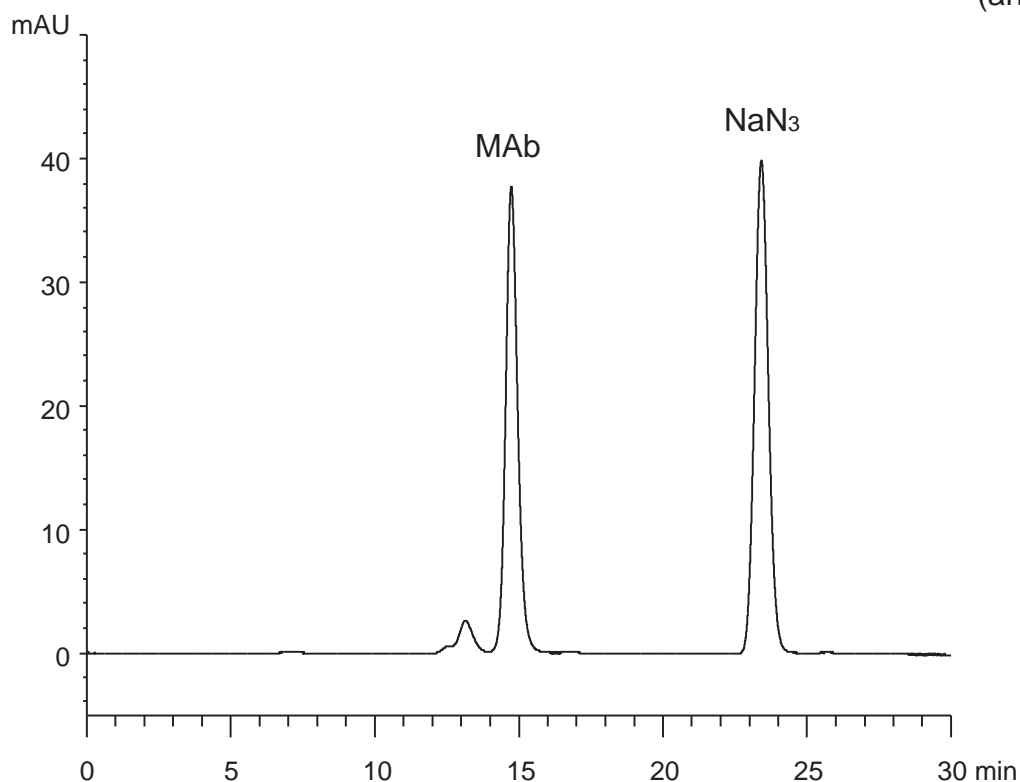
Injection : 20 μL (L : 1 μL)

Sample : A) 100 $\mu\text{L}/\text{mL}$
B-M) 1.0 mg/mL

モノクローナル抗体
Monoclonal antibody (MAb)

P080530A

MAb : Mouse monoclonal IgG1
(anti-human IgG4)



Column : YMC-Pack Diol-200
300 X 4.6 mm I.D.
Eluent : 0.1 M KH₂PO₄-K₂HPO₄ (pH 7.0)
Flow rate : 0.17 mL/min
Temperature : ambient (25°C)
Detection : UV at 220 nm
Injection : 10 µL
Sample : a commercially available mouse monoclonal IgG1 (0.05 mg/mL)
(purified by DEAE chromatography, containing NaN₃)