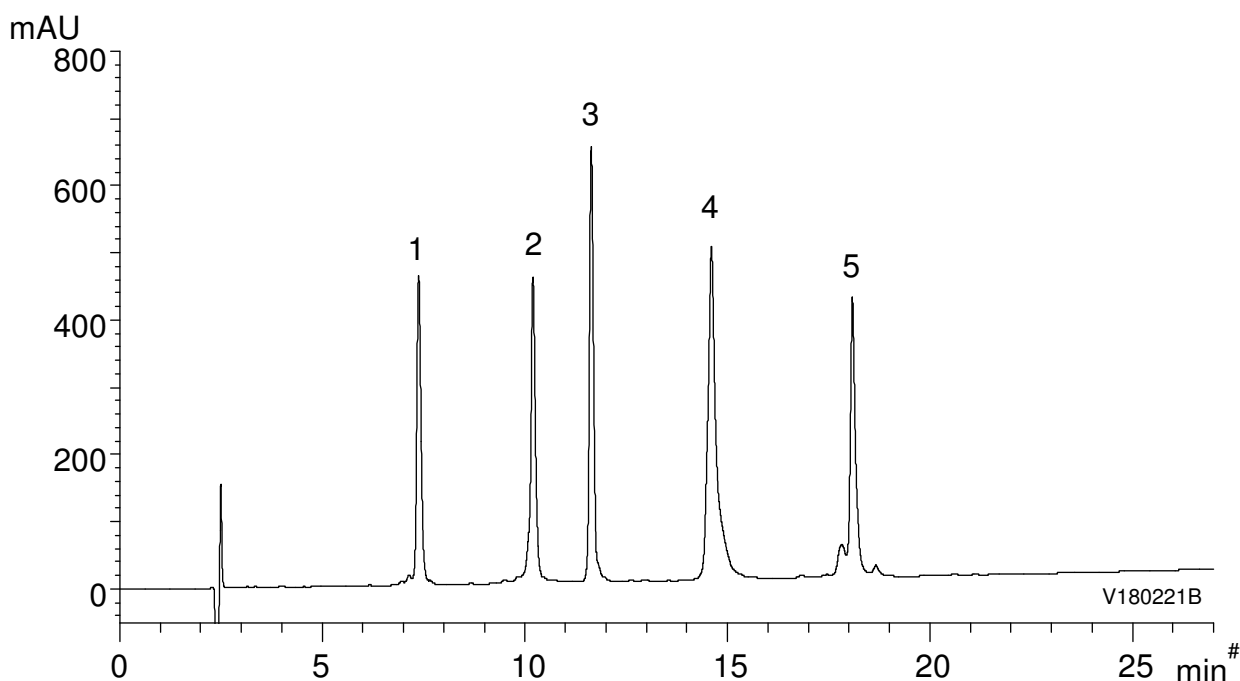


タンパク質 (MW 5,700 ~ 66,000)

Proteins (MW 5,700 ~ 66,000)

V180221B

- |   |             |
|---|-------------|
| 1. Ribonuclease A (Bovine pancreas)               | (MW 13,700) |
| 2. Cytochrome c (Horse heart)                     | (MW 12,400) |
| 3. Insulin (Bovine pancreas)                      | (MW 5,700)  |
| 4. BSA  | (MW 66,000) |
| 5. $\alpha$ -Chymotrypsinogen A (Bovine pancreas) | (MW 25,700) |



Column : YMC-Triart Bio C4 (5  $\mu$ m, 30 nm)  
150 X 3.0 mm I.D.

Eluent : A) water/TFA (100/0.1)  
B) acetonitrile/TFA (100/0.1)  
20-60%B (0-27 min), 90%B (27-35 min)

Flow rate : 0.4 mL/min

Temperature : 70°C

Detection : UV at 220 nm

Injection : 10  $\mu$ L (0.25 ~ 0.50 mg/mL)