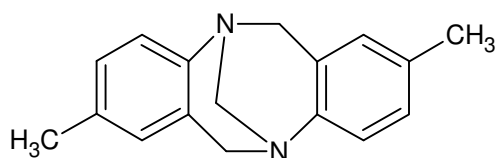
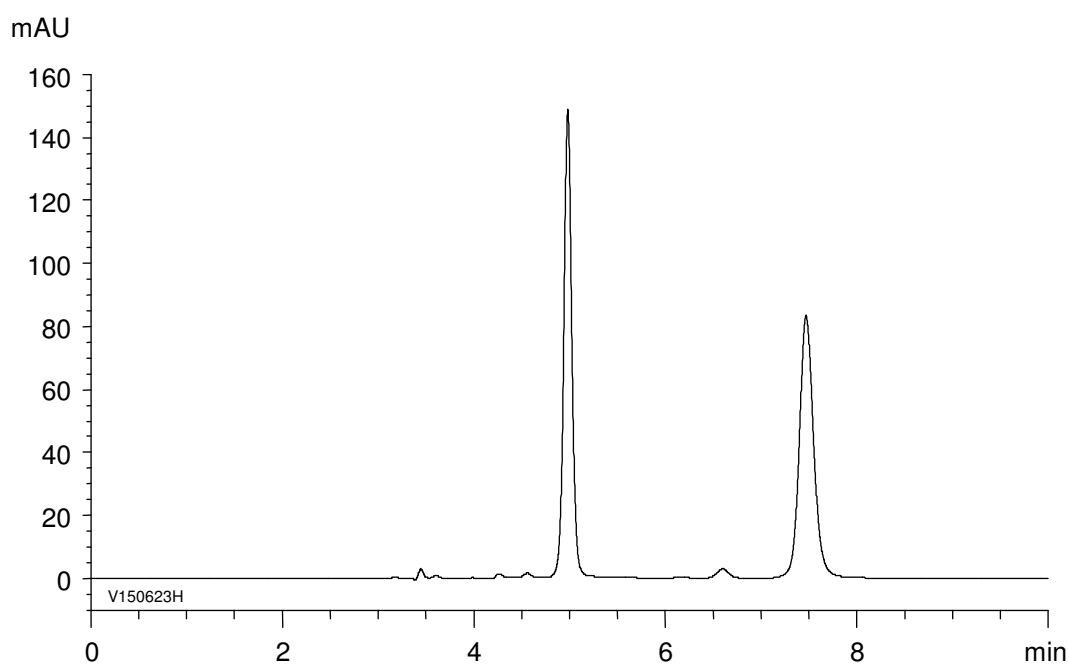


トレガー塩基  
Troger's base

V150623H



|          |      |
|----------|------|
| $\alpha$ | 2.3  |
| Rs       | 12.2 |



Column : CHIRAL ART Amylose-SA (5  $\mu$ m)  
250 X 4.6 mm I.D.  
Eluent : *n*-hexane/ethanol (90/10)  
Flow rate : 1.0 mL/min  
Temperature : 25°C  
Detection : UV at 254 nm  
Injection : 10  $\mu$ L (0.1 mg/mL)