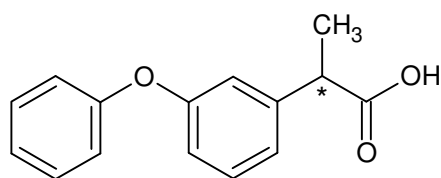
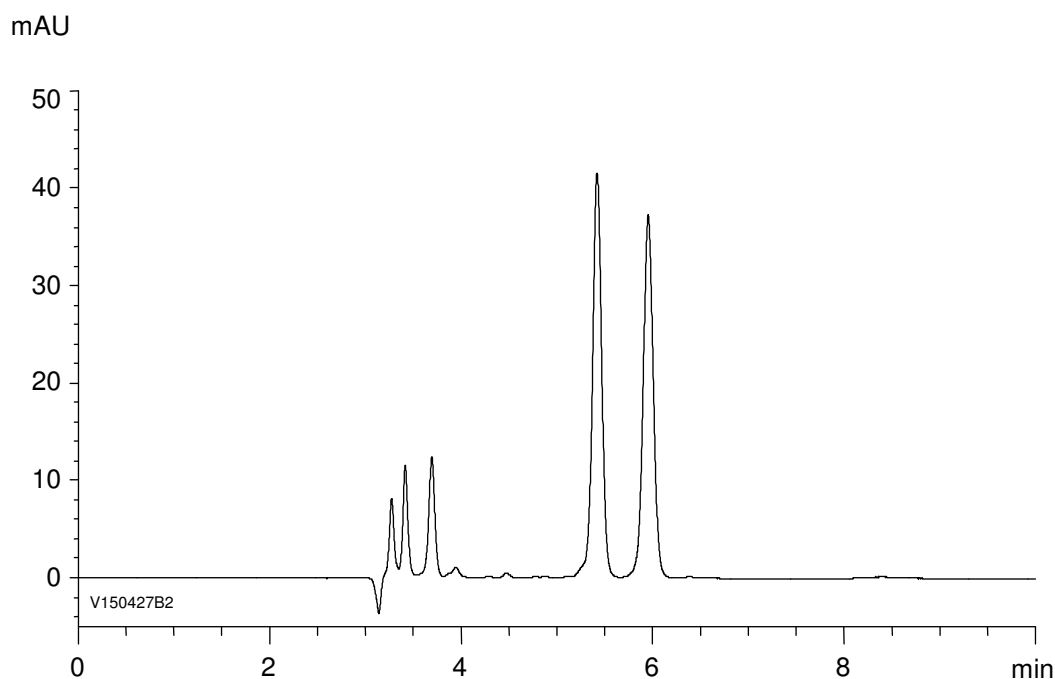


フェノプロフェン
Fenoprofen

V150427B



α	1.2
R_s	3.0



Column : CHIRAL ART Amylose-SA (5 μ m)
250 X 4.6 mm I.D.
Eluent : *n*-hexane/2-propanol/TFA (90/10/0.1)
Flow rate : 1.0 mL/min
Temperature : 25°C
Detection : UV at 254 nm
Injection : 10 μ L (0.1 mg/mL)