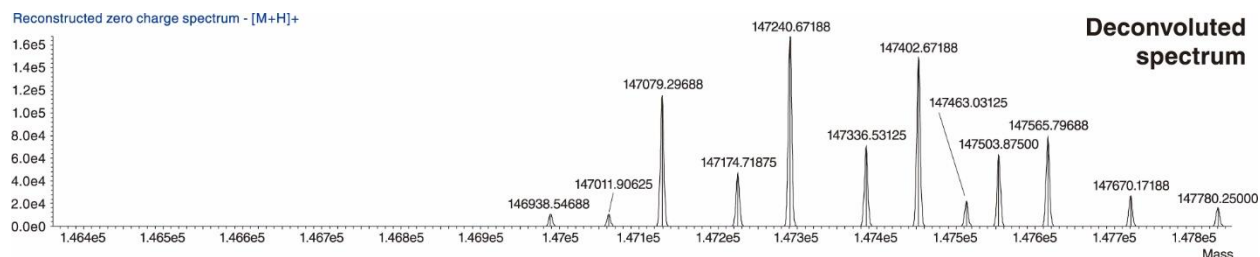
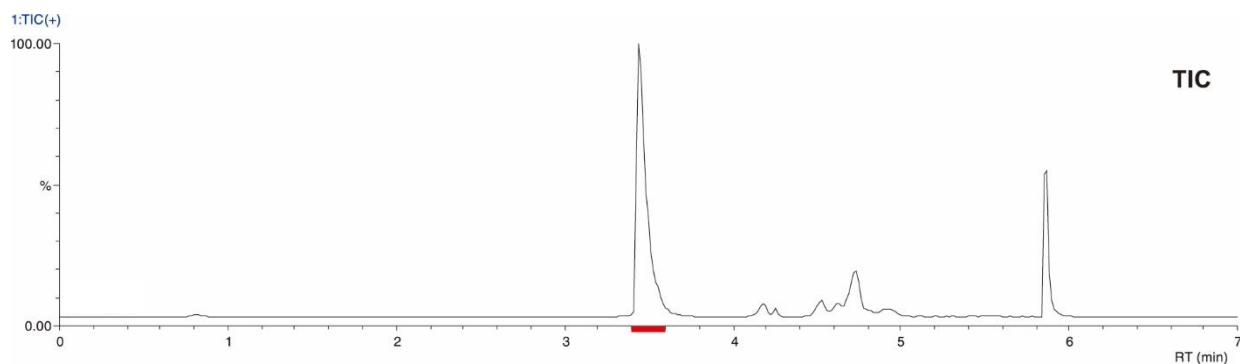


モノクローナル抗体のmicroLC-MS/MS分析
MicroLC-MS/MS of monoclonal antibody

U200609B



Column : YMC-Triart Bio C4 (3 μ m, 30 nm)
100 X 0.3 mm I.D., 1/16" end fittings

Eluent : A) water/formic acid (100/0.1)
B) acetonitrile/formic acid (100/0.1)
20%B (0-2.5 min), 20-100%B (2.5-4 min), 100%B (4-5 min), 20%B (5-7 min)

Flow rate : 15 μ L/min

Temperature : 75°C

Injection : 0.1 μ L

Sample : Rituximab dosage form (10 mg/mL, diluted to 0.1 μ g/mL)

System : LC) Shimadzu Nexera Mikros
MS) Shimadzu LCMS-9030 QTOF