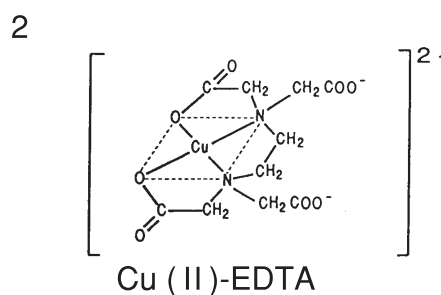
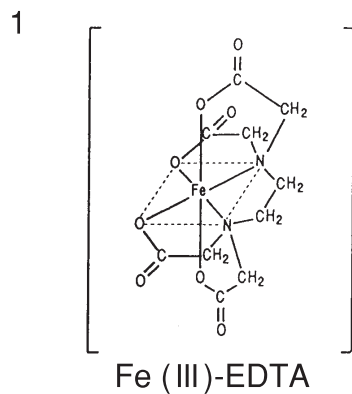
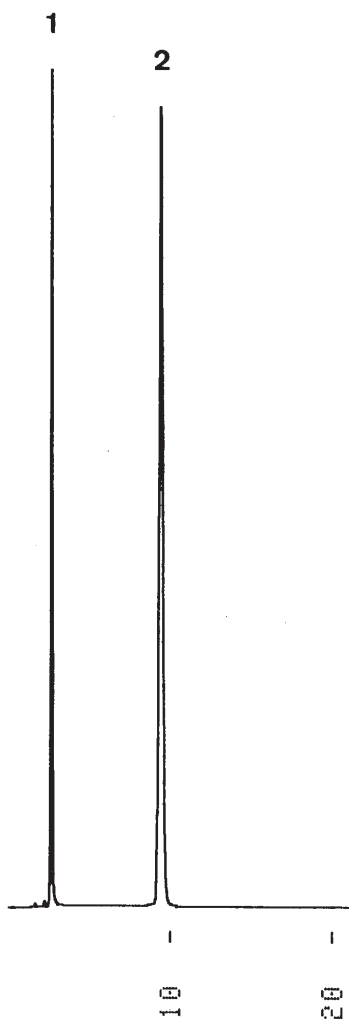


EDTAキレート  
EDTA-chelates

T940208A



EDTA: Ethylenediamine-  
tetraacetic acid

|             |  |
|-------------|--|
| Column      | : J'sphere ODS-H80 (4 $\mu$ m, 8nm)<br>150 $\times$ 4.6 mm I.D.  |
| Eluent      | : 50mM CH <sub>3</sub> COONa-CH <sub>3</sub> COOH (pH 4.6) containing<br>20mM tetrabutylammonium bromide |
| Flow rate   | : 1.0 mL/min   |
| Temperature | : 37 $^{\circ}$ C  |
| Detection   | : UV at 254 nm, 0.04 AUFS  |
| Injection   | : 10 $\mu$ L (0.017~0.13 mg/mL)  |