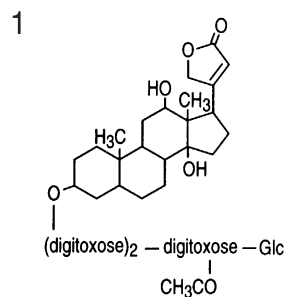
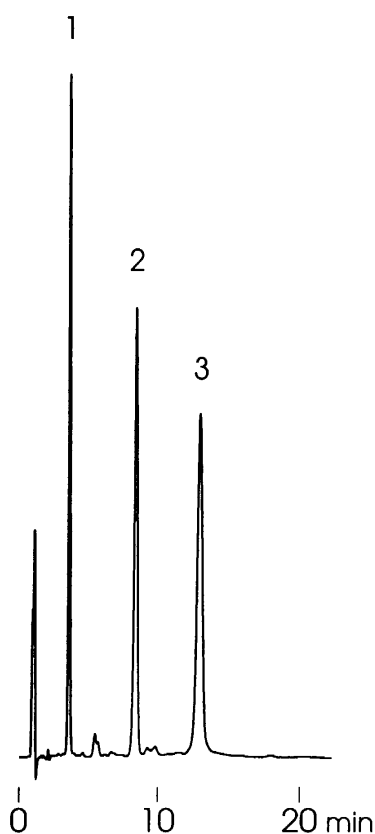
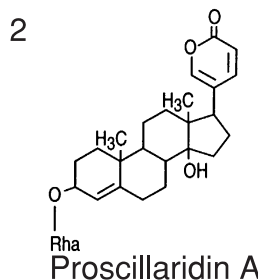


強心配糖体
Cardiac glycosides

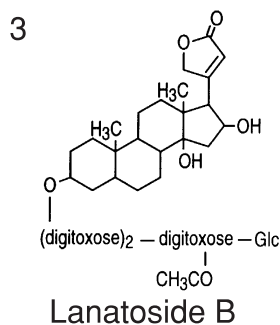
S961129G



Lanatoside C



Proscillaridin A



Lanatoside B

Column : YMC-Pack Pro C18 (5 μ m, 12nm)
75 \times 4.6 mm I.D.
Eluent : acetonitrile/water (30/70)
Flow rate : 1.0 mL/min
Temperature : 37 $^{\circ}$ C
Detection : UV at 220 nm, 0.13 AUFS
Injection : 8 μ L (0.1~0.2 mg/mL)