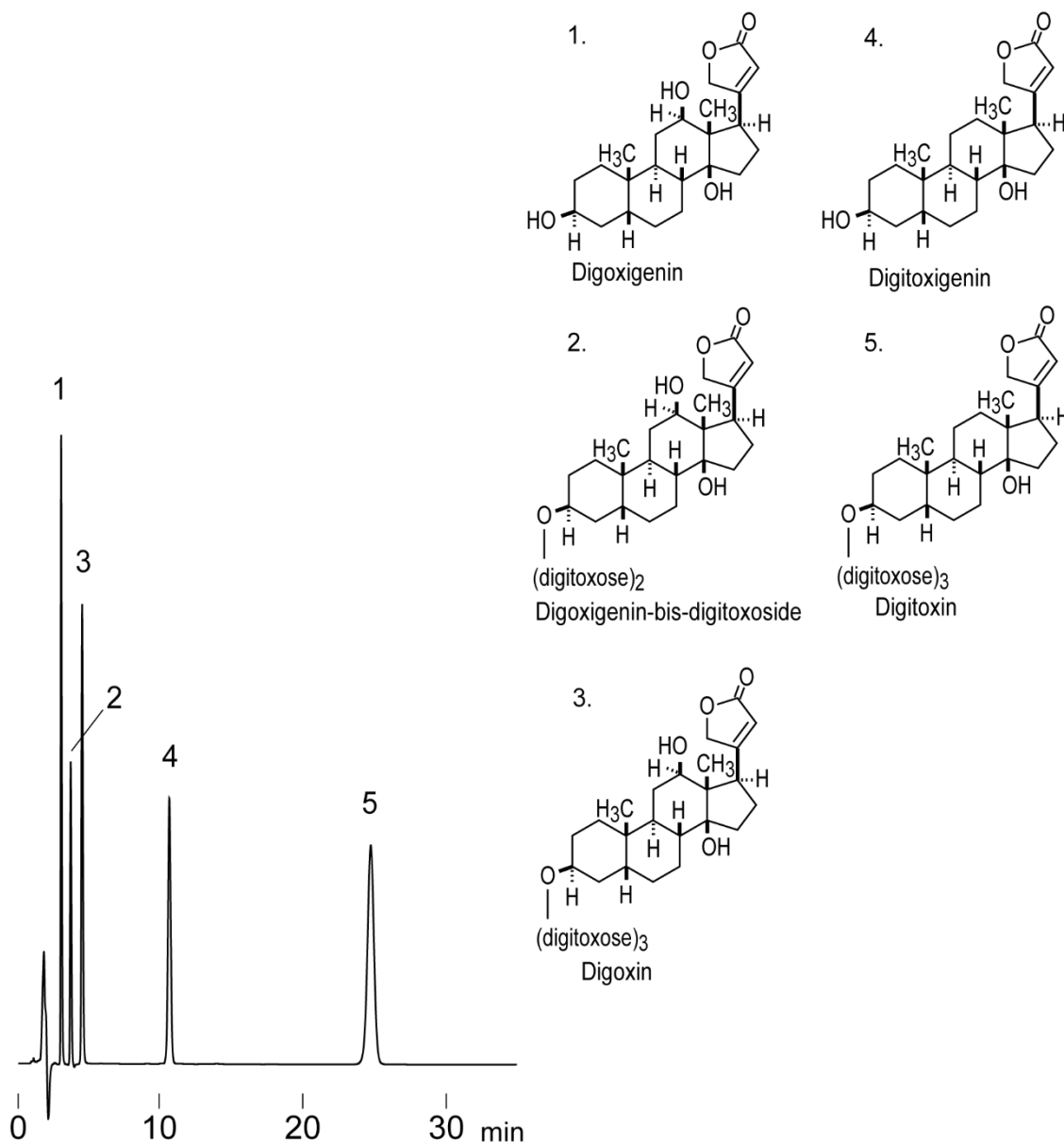


強心配糖体  
Cardiac glycosides

S961126F



Column	: J'sphere ODS-L80 (4 μm, 8 nm) 150 X 4.6 mmI.D.
Eluent	: acetonitrile/water (35/65)
Flow rate	: 1.0 mL/min
Temperature	: 37°C
Detection	: UV at 220 nm
Injection	: 4 μL (0.05–0.2 mg/mL)