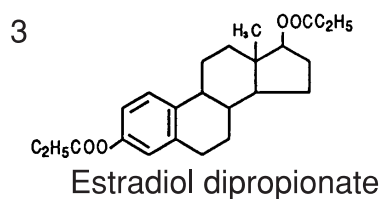
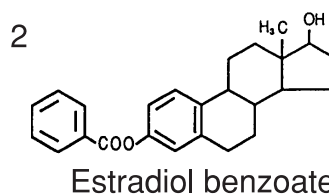
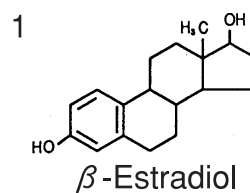
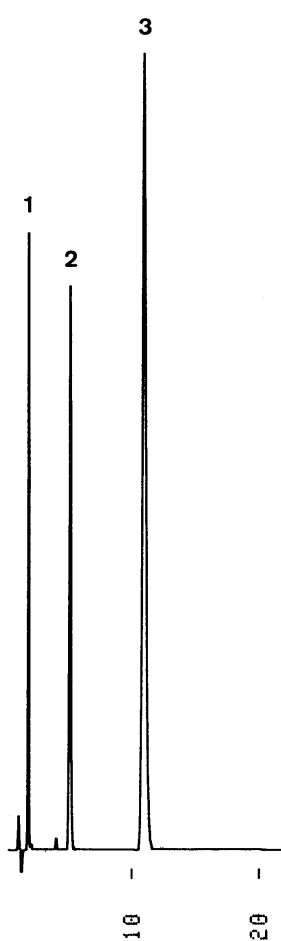


エストロジオール誘導体  
Estrogens

S940428E



Column : J'sphere ODS-L80 (4  $\mu$  m, 8nm)  
75  $\times$  4.6 mm I.D.  
Eluent : acetonitrile/water (65/35)  
Flow rate : 1.0 mL/min  
Temperature : 37  $^{\circ}$ C  
Detection : UV at 230 nm, 0.13 AUFS  
Injection : 6  $\mu$ L (0.08~0.5 mg/mL)