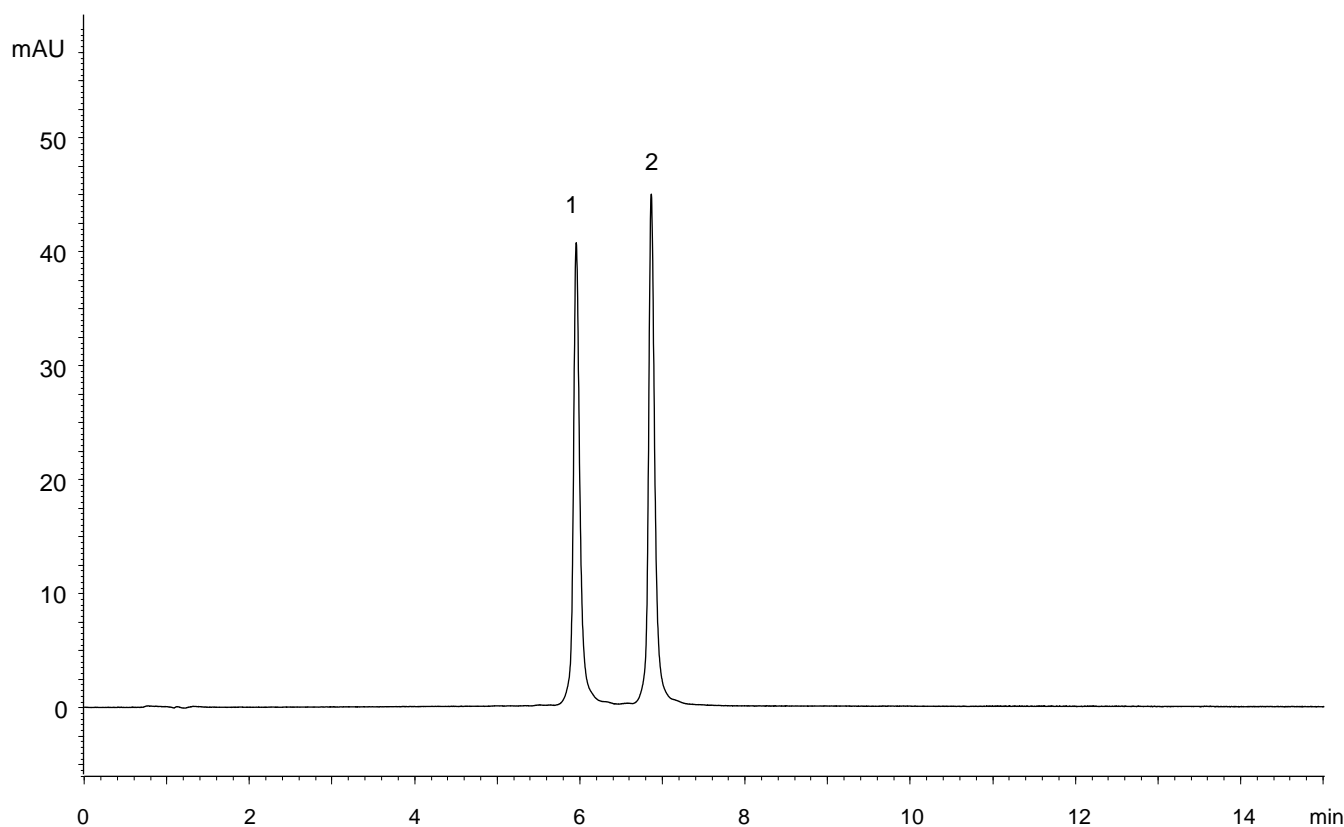


合成オリゴヌクレオチド (一本鎖 DNA)  
Synthetic oligonucleotides (Single-strand DNA)

P171116C

1. 5'-TCATCACA CTGAATACCAAT-3' (20 mer)
2. 5'-GTCATCACA CTGAATACCAAT-3' (21 mer)



Column	: BioPro IEX QF (5 $\mu$ m) 100 X 4.6 mm I.D.
Eluent	: A) 10 mM NaOH B) 10 mM NaOH containing 1.0 M NaClO <sub>4</sub> 25-55%B (0-15 min), 100%B (15-20 min)
Flow rate	: 1.0 mL/min
Temperature	: 25°C
Detection	: UV at 260 nm
Injection	: 4 $\mu$ L (5 nmol/mL)