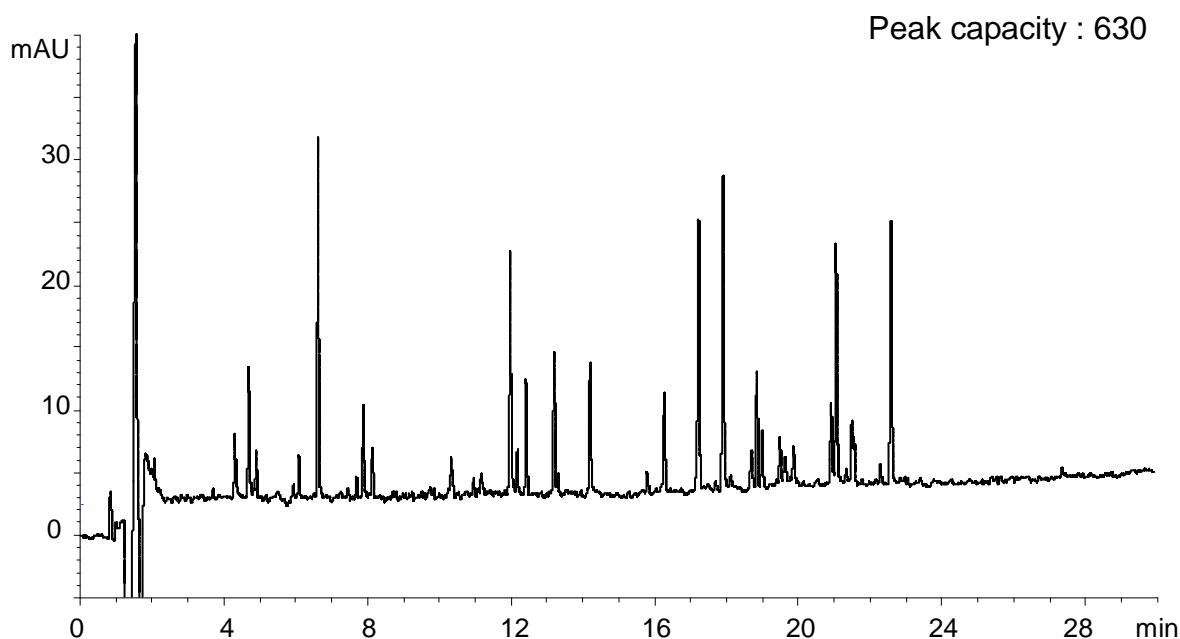


ペプチドマッピング

Peptide mapping

P110707A



Column	: YMC-Triart C18 (1.9 $\mu$ m, 12 nm) 200 X 2.0 mmI.D. (Two coupled 100 X 2.0 mmI.D.)
Eluent	: A) water/TFA (100/0.1) B) acetonitrile/TFA (100/0.08) 5-40%B (0-30 min)
Flow rate	: 0.4 mL/min
Temperature	: 70°C
Detection	: UV at 220 nm
Injection	: 20 $\mu$ L
Sample	: Tryptic digest of Bovine Hemoglobin (2.5 nmol/mL)
Pressure	: 58.1-61.6 MPa (8,430-8,930 psi)

Peak capacity =  $1 + (\text{gradient time}/\text{peak width}^*)$

\* peak width =  $2W_{0.5h}$  average