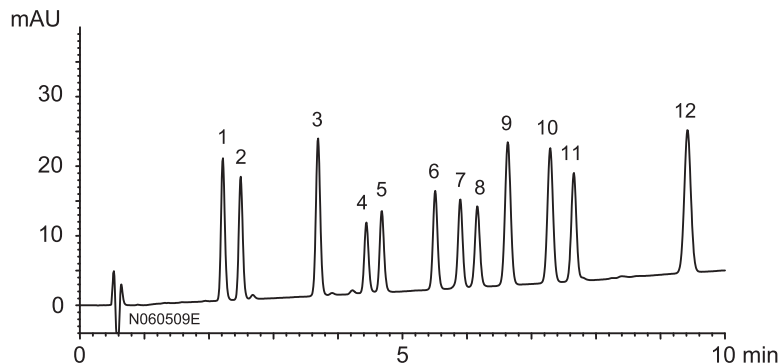


大豆イソフラボンの高速分離 Rapid separation of soy isoflavones

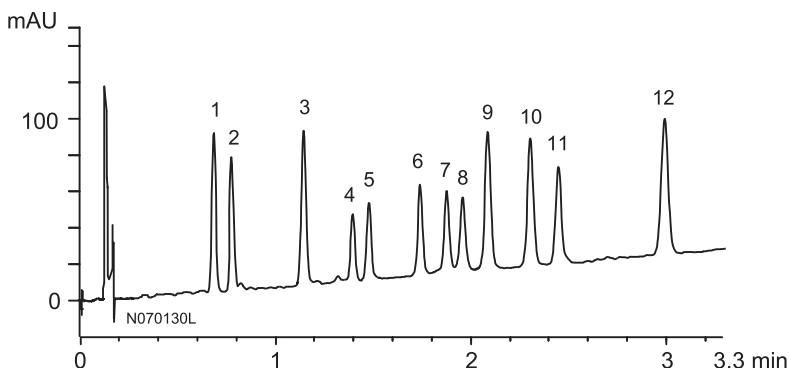
N070629C

Fast LC method

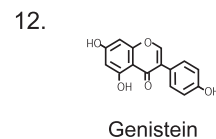
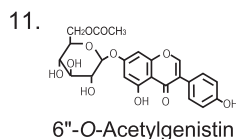
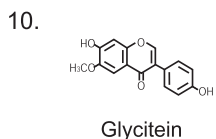
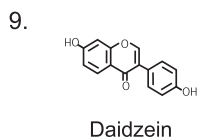
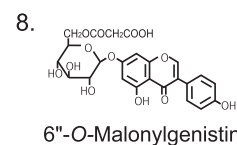
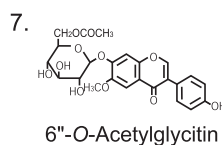
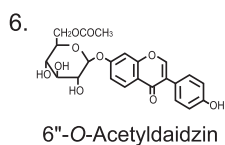
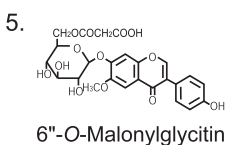
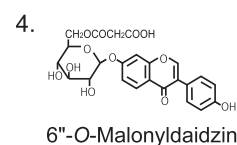
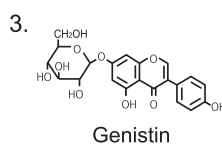


Column : Hydrosphere C18
(3 μ m, 12nm)
50 X 4.6 mm I.D.
Flow rate : 1.5 mL/min
Gradient : 25-60%B (0-10 min)
Injection : 3 μ L

Ultra-fast LC method



Column : YMC-UltraHT Hydrosphere C18
(2 μ m, 12nm)
50 X 2.0 mm I.D.
Flow rate : 0.9 mL/min
Gradient : 25-60%B (0-3.3 min)
Injection : 0.6 μ L



Eluent : A) water / CH₃COOH (100/3)
B) acetonitrile / water / CH₃COOH (50/50/3)
Temperature : 35°C
Detection : UV at 254 nm
Sample : 0.01 mg/mL