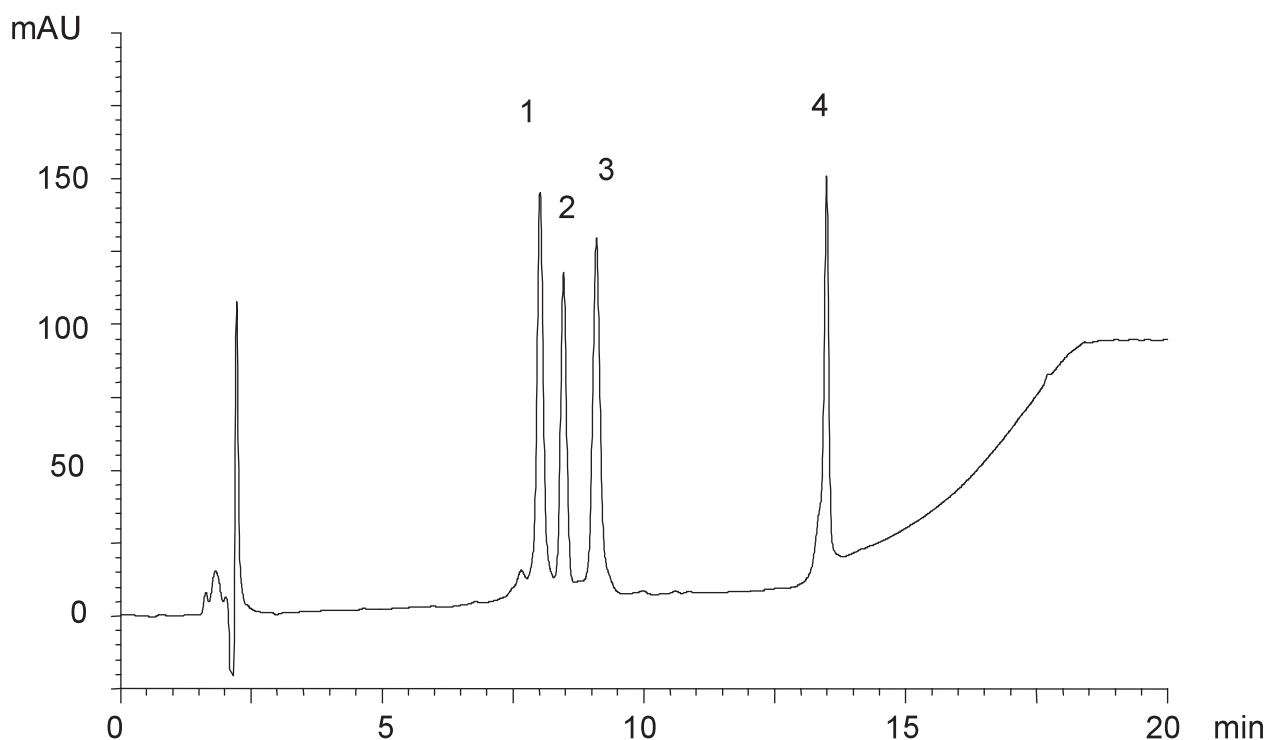


タンパク質(MW 18,300 - 45,000)

Proteins(MW 18,300 - 45,000)

N041126A

1.  $\beta$ -Lactoglobulin B (Bovine milk) (MW 18,300)
2.  $\beta$ -Lactoglobulin A (Bovine milk) (MW 18,400)
3.  $\alpha$ -Chymotrypsinogen A (Bovine pancreas) (MW 25,700)
4. Ovalbumin (MW 45,000)



Column	: YMC-Pack C4 (5 $\mu$ m, 30nm) 150 $\times$ 4.6 mm I.D.
Eluent	: A)water/TFA (100/0.1) B)acetonitrile/TFA (100/0.1) 40-50%B (0-10min),50-90%B (10-15min),90%B (15-20min)
Flow rate	: 1.0 mL/min
Temperature	: 37 $^{\circ}$ C
Detection	: UV at 220 nm
Injection	: 10 $\mu$ L (0.2~0.3 mg/mL)