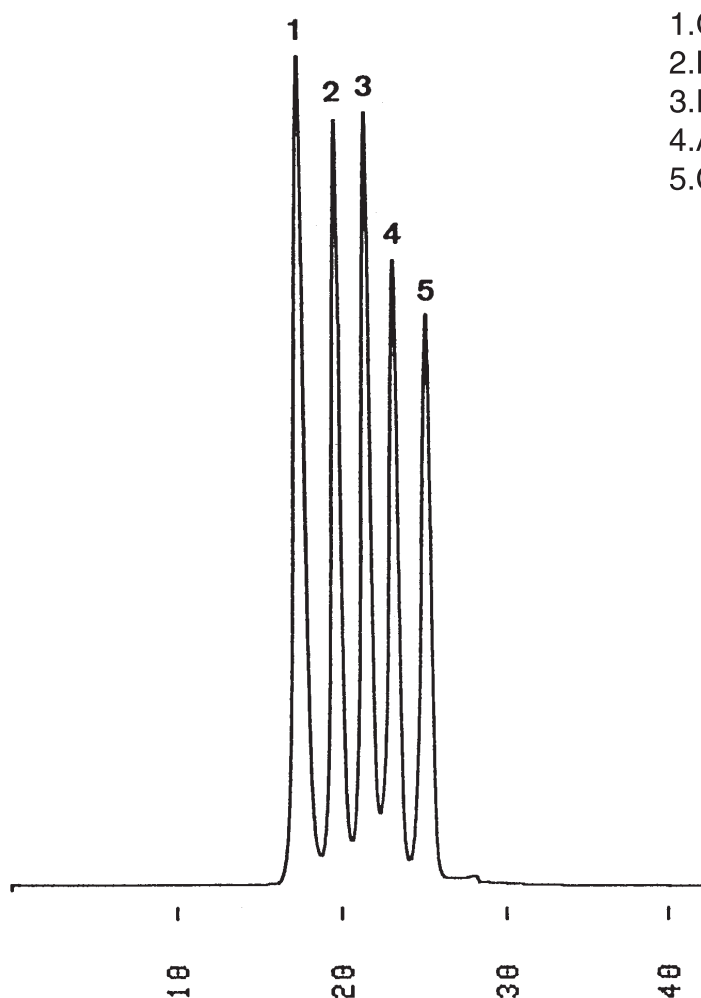


タンパク分子量マーカー
Proteins for molecular weight marker

G911214A



1. Glutamate dehydrogenase (MW 290,000)
2. Lactate dehydrogenase (MW 142,000)
3. Enolase (MW 67,000)
4. Adenylate kinase (MW 32,000)
5. Cytochrome *c* (MW 12,400)

| | |
|-------------|---|
| Column | : YMC-Pack Diol-200 500 × 8.0 mm I.D. |
| Eluent | : 0.1M KH ₂ PO ₄ -K ₂ HPO ₄ (pH 7.0) containing 0.2M NaCl |
| Flow rate | : 0.7 mL/min |
| Temperature | : ambient (26 °C) |
| Detection | : UV at 280 nm, 0.08 AUFS |
| Injection | : 15 μL (100 μL/1 vial) |
| Sample | : MW-Marker(HPLC) manufactured by ORIENTAL YEAST CO.,LTD. |