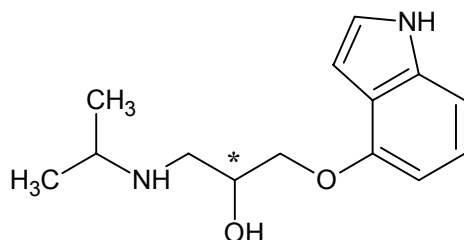
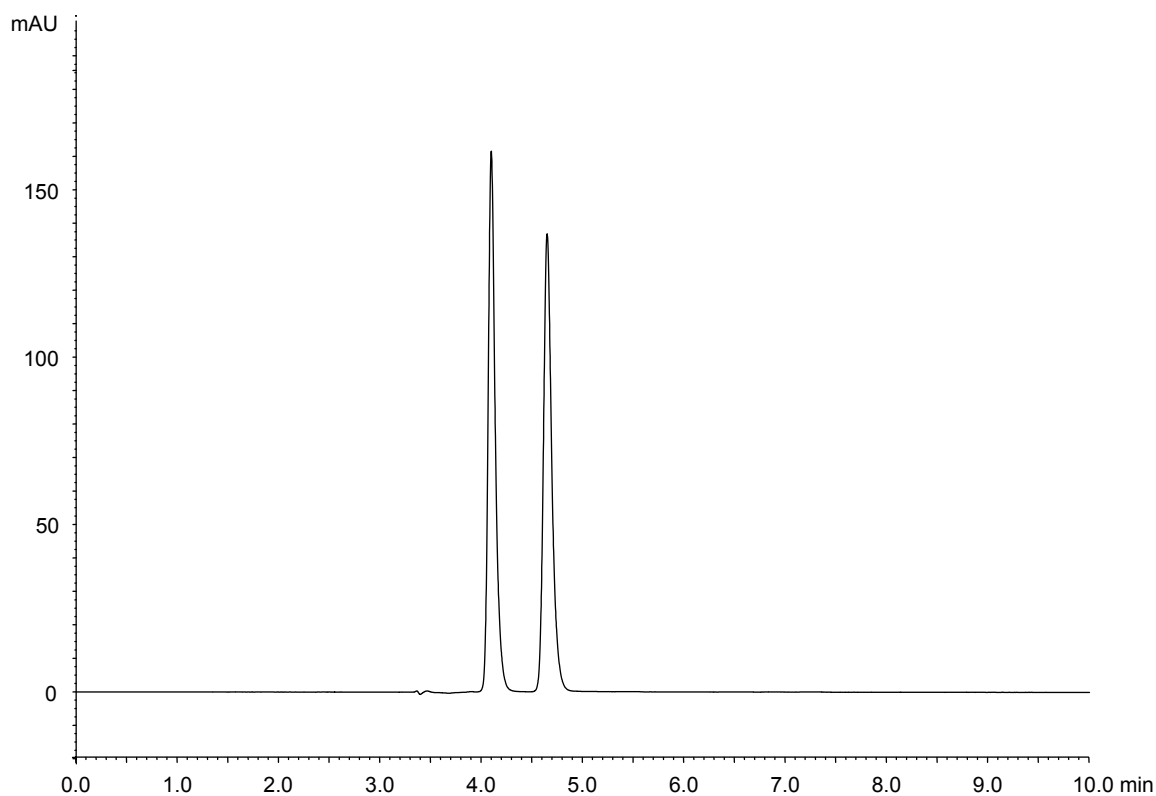


ピンドロール  
Pindolol

F150213C



$\alpha$	1.5
Rs	4.2



Column : CHIRAL ART Cellulose-SB (5  $\mu$ m)  
250 X 4.6 mm I.D.

Eluent : methanol/diethylamine (100/0.1)

Flow rate : 1.0 mL/min

Temperature : 25°C

Detection : UV at 265 nm

Injection : 10  $\mu$ L (100  $\mu$ g/mL)