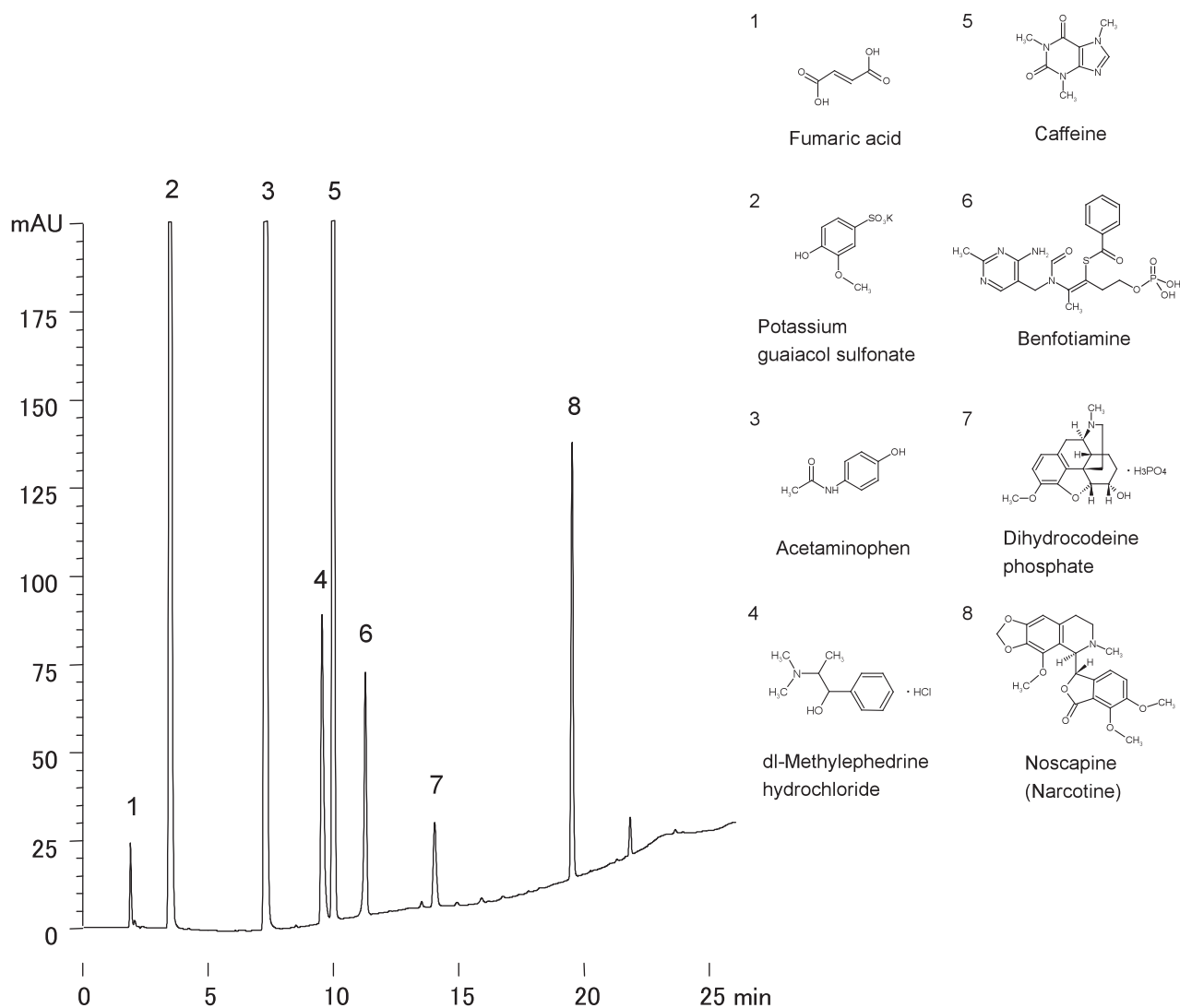


市販風邪薬
A commercial cough/cold medication

F040706B



Column : YMC-Pack Pro C18 (5 μ m, 12nm)
150 \times 4.6 mm I.D.

Eluent : A) 20mM KH₂PO₄-K₂HPO₄ (pH 6.9)
B) methanol
5-95%B(0-20min), 95%B(20-25min)

Flow rate : 1.0 mL/min

Temperature : 37 $^{\circ}$ C

Detection : UV at 215 nm(0-13min), UV at 235 nm(13-25min)

Injection : 2 μ L (15 mg/mL)

Sample : 70% methanol extract of a commercially available cough/cold medication