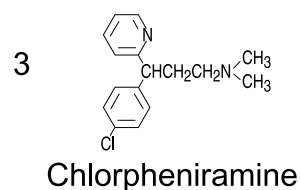
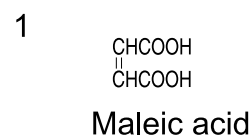
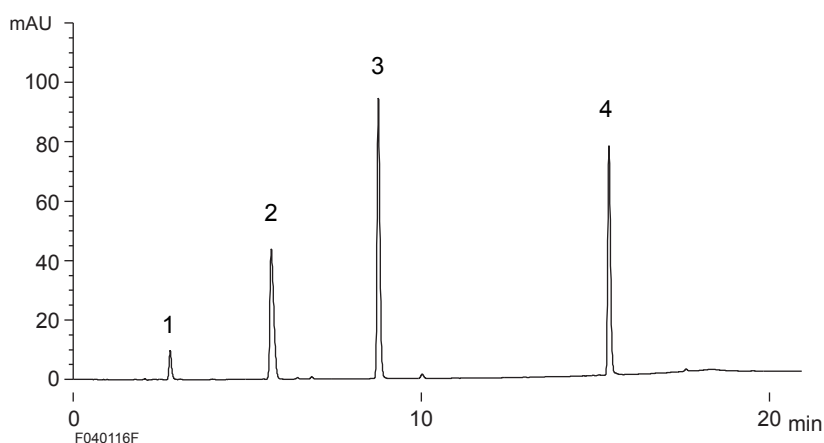


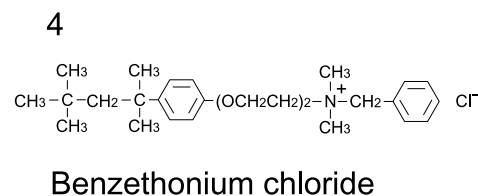
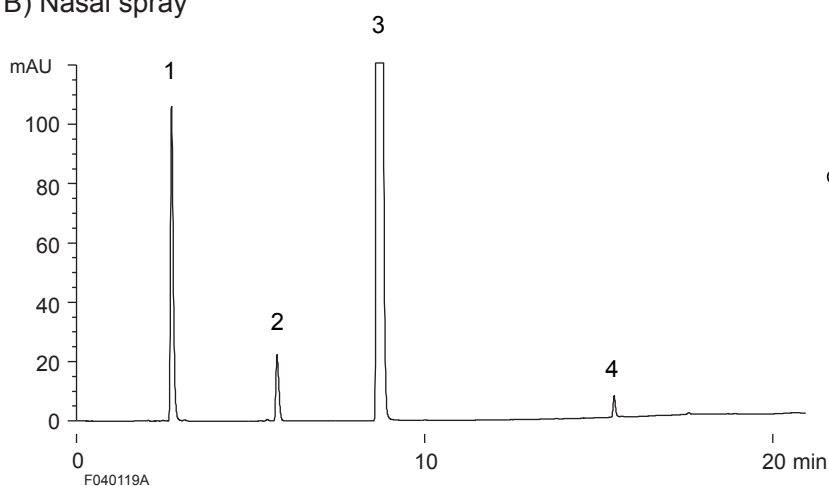
市販点鼻薬
A commercial nasal spray

F040119A

A) Standard



B) Nasal spray



Column : YMC-Pack Pro C18 (5 μ m, 12nm)
150 \times 4.6 mm I.D.

Eluent : A) 20mM KH₂PO₄ - H₃PO₄ (pH 2.5)
B) methanol
20-90%B(0-15min), 90%B(15-20min)

Flow rate : 1.0 mL/min

Temperature : 37 $^{\circ}$ C

Detection : UV at 260 nm

Injection : A) 5 μ L (0.1~0.7 mg/mL)
B) 3 μ L (2 times dilution of a commercially available nasal spray with water)