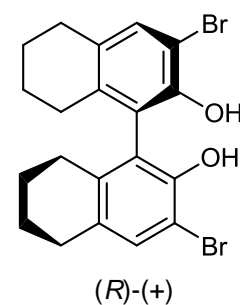
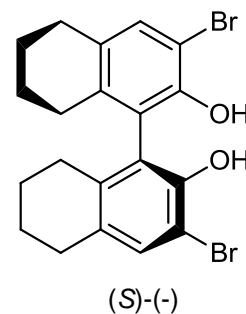
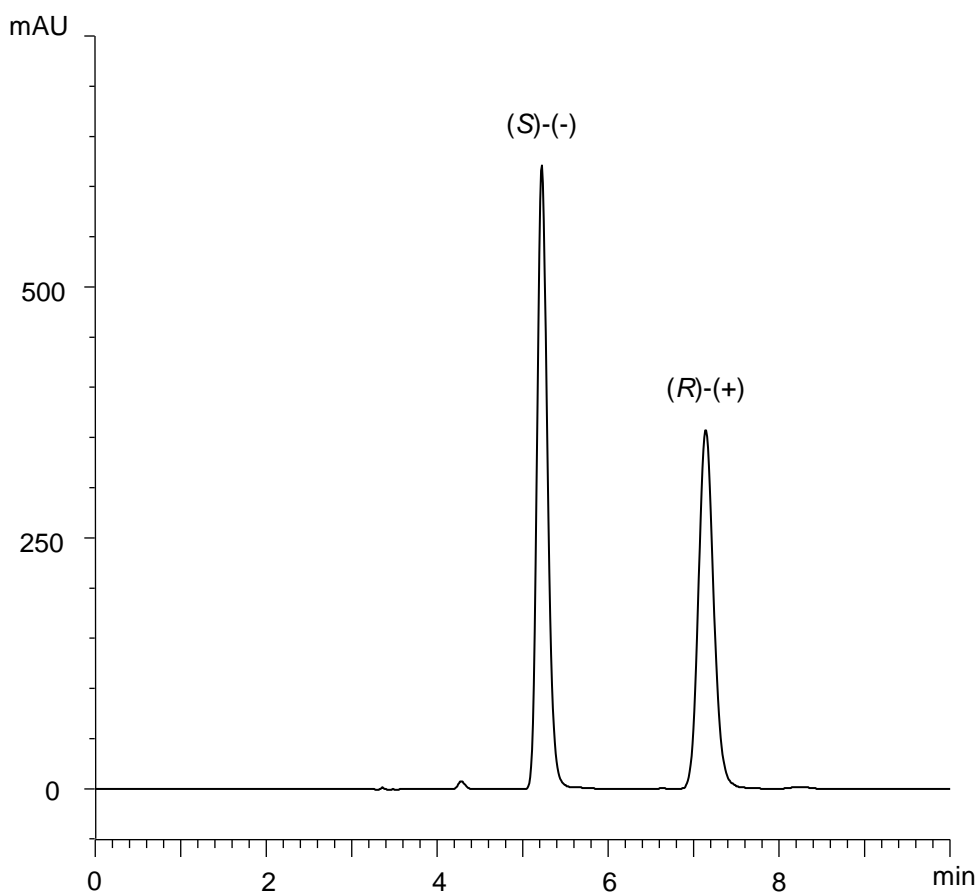


3,3'-ジブromo-5,5',6,6',7,7',8,8'-オクタヒドロ-1,1'-ビ-2-ナフトール

3,3'-Dibromo-5,5',6,6',7,7',8,8'-octahydro-1,1'-bi-2-naphthol

E170801S



α	1.8
R_s	7.0

Column : CHIRAL ART Amylose-SA (5 μ m)
250 X 4.6 mm I.D.

Eluent : *n*-hexane/2-propanol (70/30)

Flow rate : 1.0 mL/min

Temperature : 25°C

Detection : UV at 290 nm

Injection : 10 μ L (0.5 mg/mL)